

Atmosphere

User Manual

Accessories Overview

Six plug and play smart wall plate accessories can be populated on AZM accessory ports to add remote source inputs or provide zone control.

Accessories include:

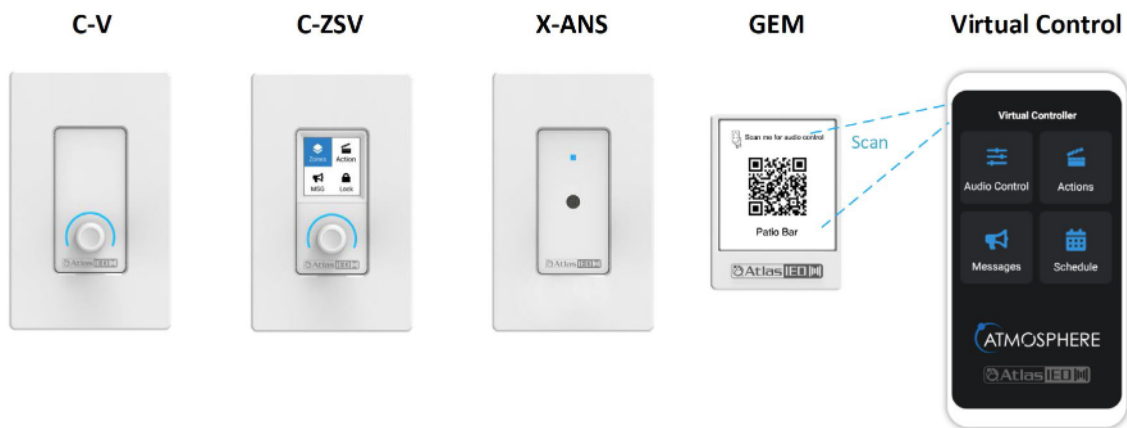
- 3 x audio inputs- balanced mic/line XLR, dual RCA stereo summed with 3.5mm, and Bluetooth® audio wall plate inputs.
- 2 x controllers- volume controls, volume controls with source select, scene recall, and message playback
- 1 x ambient noise sensor for Ambient Noise Compensation control.

Any control accessory can be daisy chained on a single cable digital bus and assigned to any zone, reducing installation wiring time and complexity.

Virtual control can be established with any mobile device by QR code scanning.

Note: For audio wall plates **A-XLR**, **A-RCA**, and **A-BT**, see **Audio Wall Plate Inputs** earlier in this manual.

Controller Accessories



1. **C-V** – Volume Control
2. **C-ZSV**- Volume Control with Source select, scene recall, and message playback
3. **X-ANS** – Ambient Noise Sensor for supplying ambient noise levels to the Ambient Noise Compensation algorithm
4. **GEM** – Wall mountable frame/placard to hold a virtual wall controller QR code printed from the user interface. Controls for the QR code can be opted in the user interface.

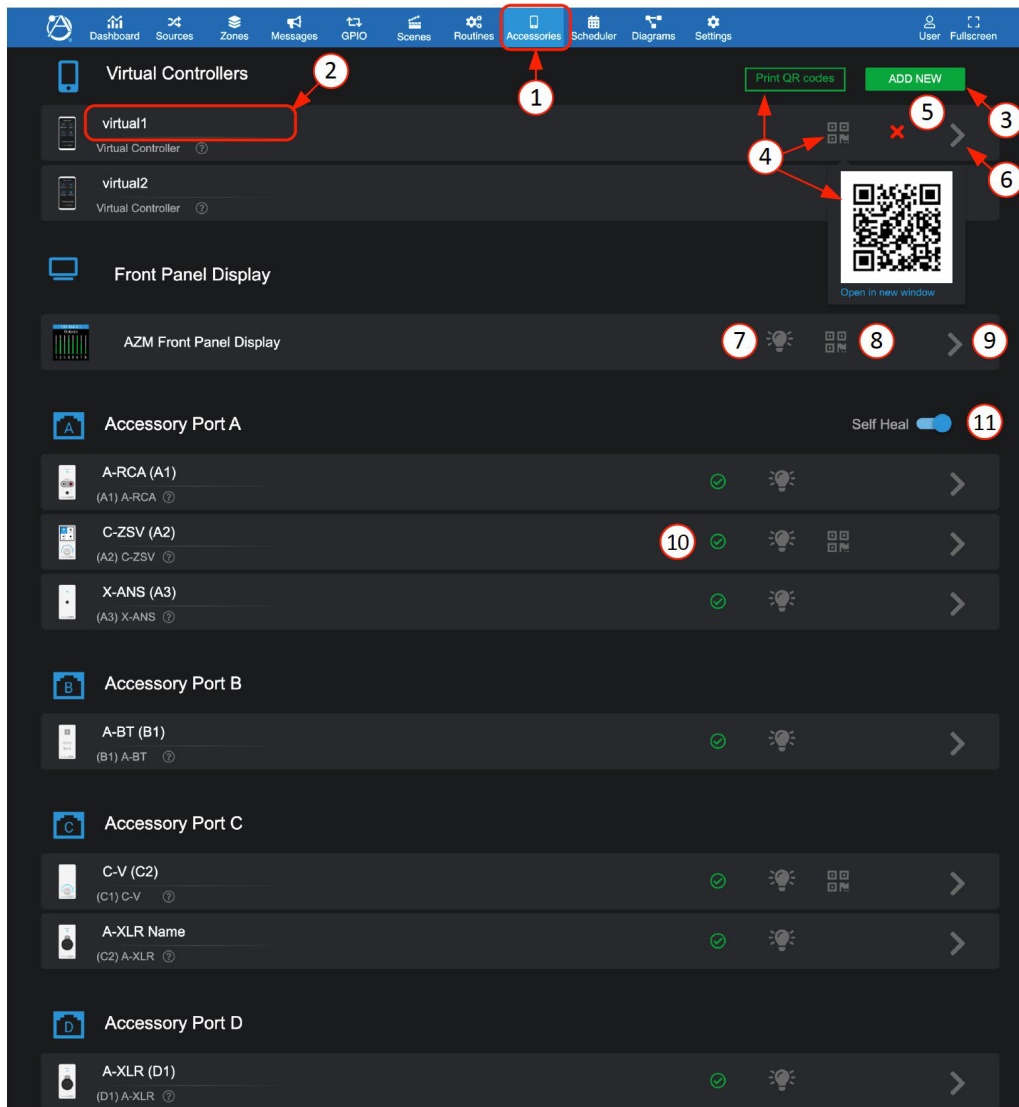
The Accessories UI page is where you add and configure settings for the following:

- **Virtual Controllers (Mobile)** – Any mobile device can be turned into a controller by using the “+ ADD NEW” setup to create a QR code to scan and instantly use your mobile device to access the same features as a wired controller. (no app download required)
- **Front Panel Display** – Select QR Code to enlarge and scan with mobile device, a front panel UI screen will display access to control zones, sources, and volume levels.
- **Accessory Ports** A-B (AZM4) or Ports A-B-C-D (AZM8) – All wall plate accessories are connected to the AZM accessory ports. These ports populate as you connect the wired accessories and the AZM detects them. Once detected, they appear on the port as shown below.

Atmosphere

User Manual

Accessories



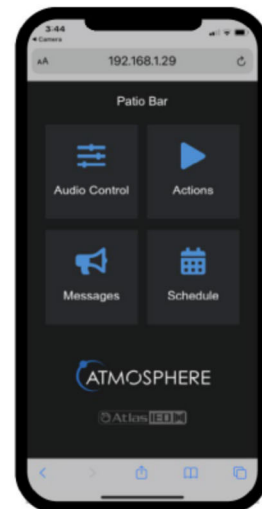
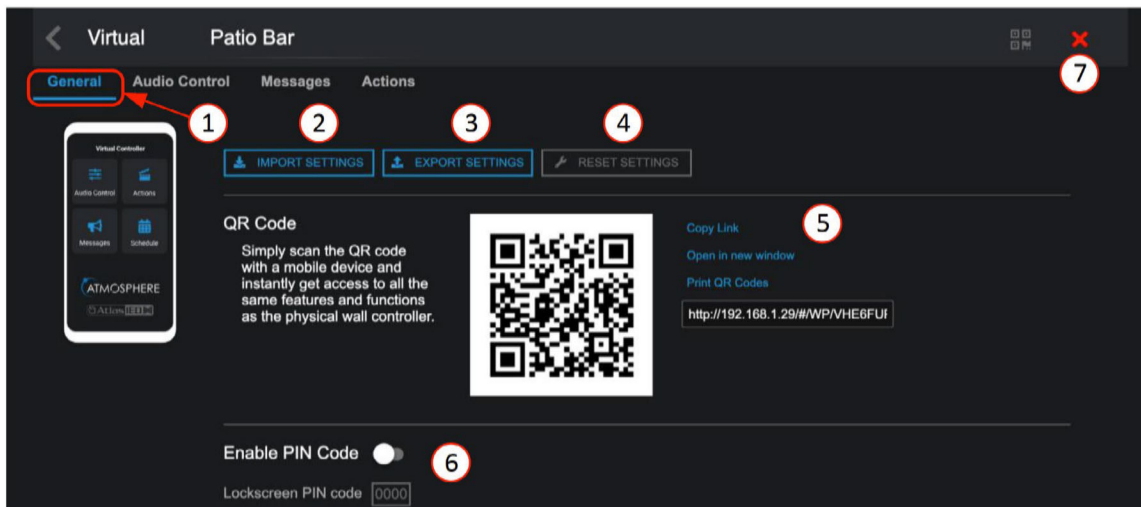
1. Accessories tab
2. Device name will display or can be entered. The name will populate the UI wherever device is referred to.
3. "+ADD NEW" allows up to 25 virtual controllers to be added and configured.
4. Selecting QR Code icon will pop-up a QR code to scan, or, select Print and print all configured QR codes, formatted for our GEM QR plaques. One is included with each AZM. Additional GEM plaques can be purchased in packs of five. See: <https://www.atlasied.com/gem-5>
Note: For QR control to work, mobile device must be connected to the same network as the AZM. It is also recommended to use a static IP on the AZM to ensure repeated reliable connection.
5. "X" deletes virtual controller.
6. Open the settings pages to configure the controller.
7. Locate icon will cause an accessory connected device to flash to physically identify it. If left on, it will automatically shut off after 30 minutes.
8. Front panel display QR code can be scanned and used as an additional virtual controller with the same access control as a C-ZSV.
9. Select ">" to go to Settings to configure the front panel display.
10. On the accessory ports, the wall plate icon image and name are displayed along with the status that lights up with a green check mark when wired accessories are successfully detected, updated, and ready for use on the port.
11. After installing a system, switch on "Self-Heal" and the system will automatically retain the settings in the event a wall controller accessory requires replacement on a port.

Atmosphere

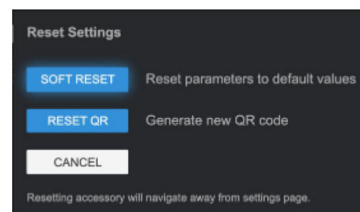
User Manual

Setting up a virtual wall controller

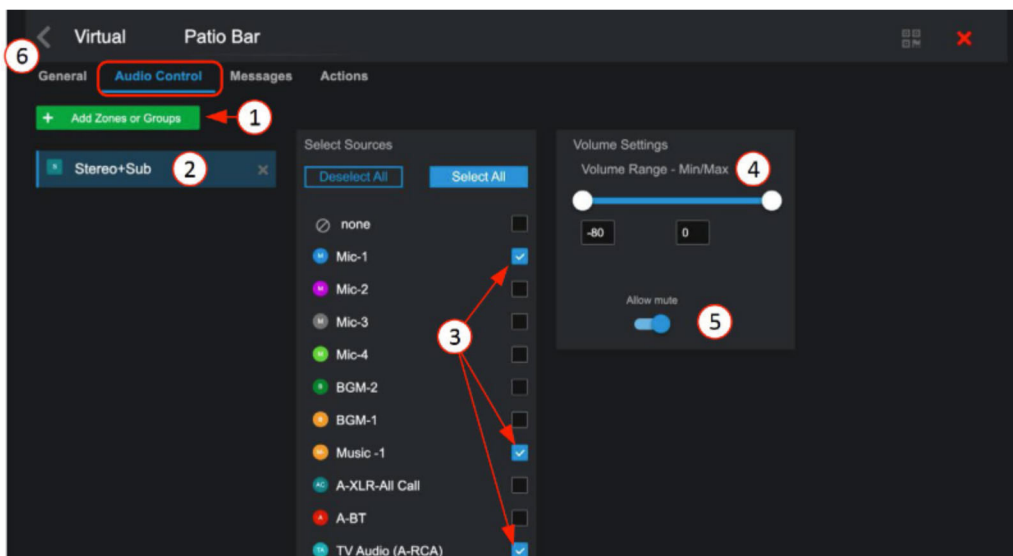
General Settings Page



1. General settings- select Accessories tab – Virtual Controllers –for Settings.
2. Import Settings – this allows a saved configuration file to be imported to duplicate an existing setup.
3. Export Settings – this saves the configuration file as a backup to use for importing.
4. Reset Settings – chose from Soft Reset (back to default) or Reset QR code to create an updated QR.
5. Various ways to use the QR codes, copy link, share link, open in new window, or print.
6. Allows setting a four number PIN code to restrict access, if desired.
7. Click “X” to delete virtual controller.



Audio Control Page

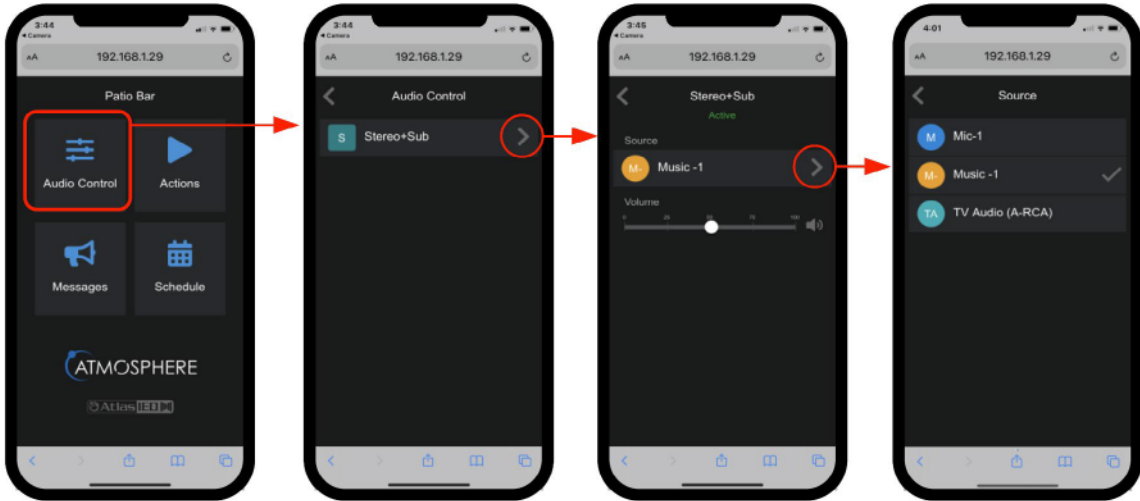


1. Add zones and groups you want to control on the mobile device.
2. Select the zones and groups to be controlled by the mobile device.
3. Select input sources individually or all to be displayed as a selection list on mobile device.
4. Set an acceptable range of volume to adjust.
5. Set mute to allow it to be available on the mobile device to toggle.
6. Click “<” icon to return to Accessory page.

Atmosphere

User Manual

Virtual Wall Controller Setup – Audio Control

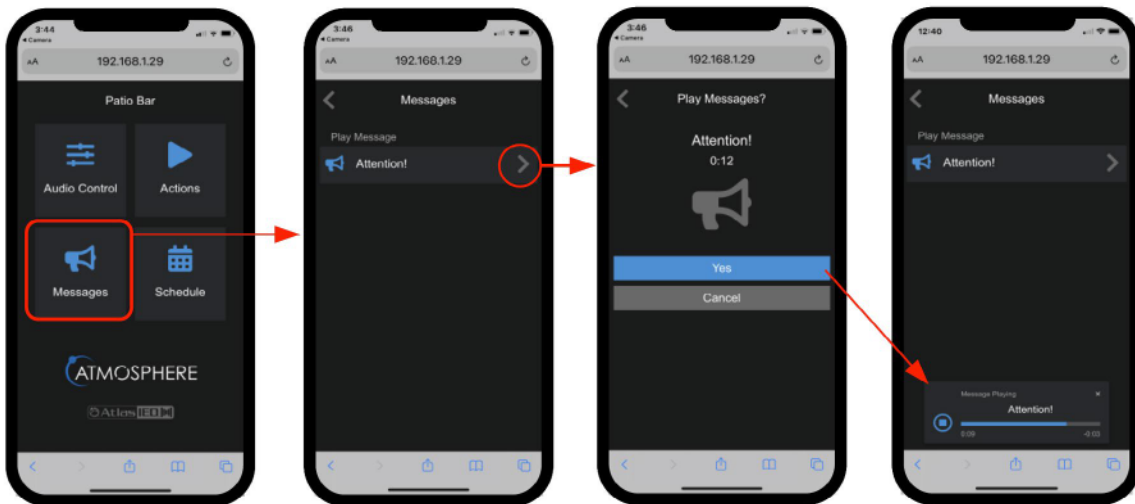


Messages Page



1. Open Messages setup page.
2. Select from the list of pre-configured messages to be included to control on the mobile device.
3. Press return link "<" to exit page, save settings, and return to accessories main page.

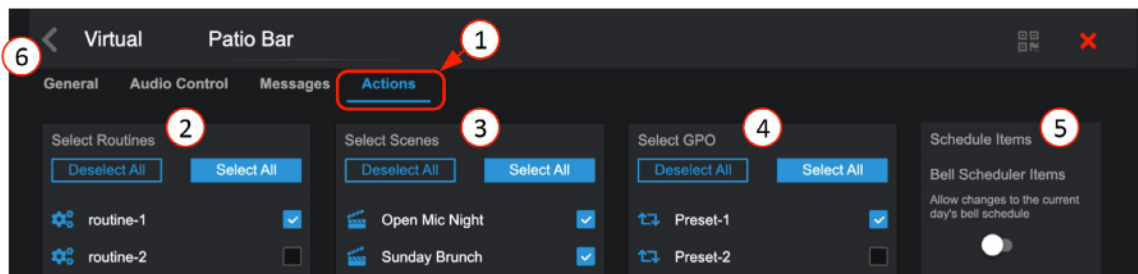
Virtual Wall Controller Setup– Messages



Atmosphere

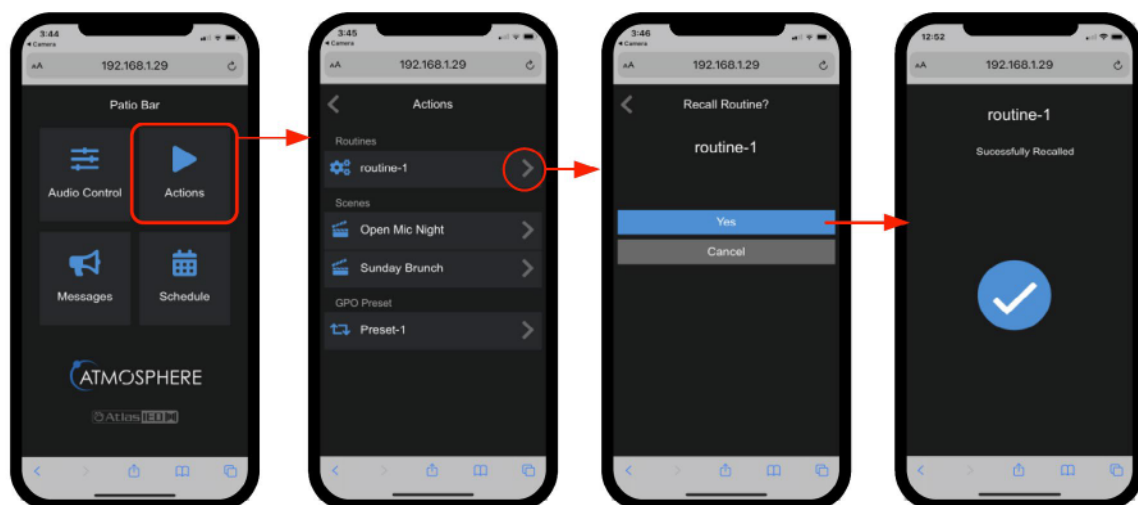
User Manual

Actions Page



1. Open Actions page.
2. Select from the list of pre-configured routines to be included on mobile device.
3. Select from the list of pre-configured scenes to be included on mobile device.
4. Select from the list of pre-configured GPO presets to be included on mobile device.
5. Bell Scheduler change – When enabled, this lets you make an on-the-spot change to the current day’s schedule.
6. Return “<” to Accessories page and scan QR code with mobile device. (Note: device must be on the same network as the AZM.)
Open the UI in mobile device. Screen will show selections made for control.

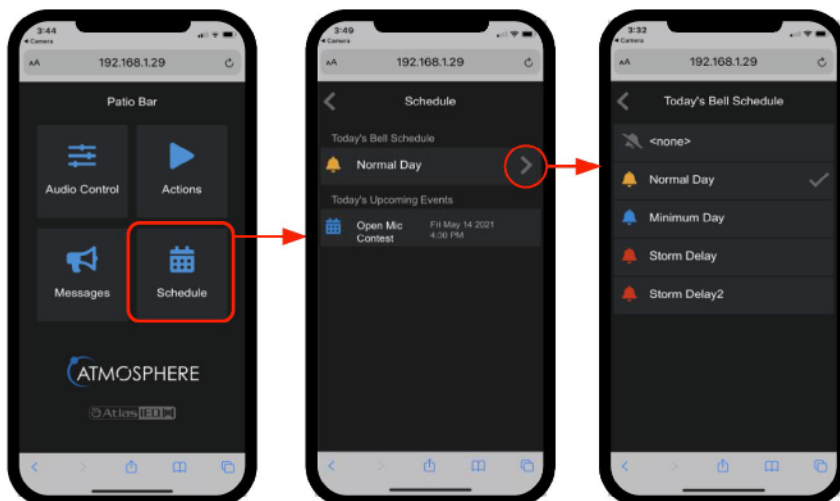
Virtual Wall Controller Setup – Actions



Virtual Wall Controller Setup – Schedule

The Schedule will show any scheduled events along with the bell schedule type expected for the day.

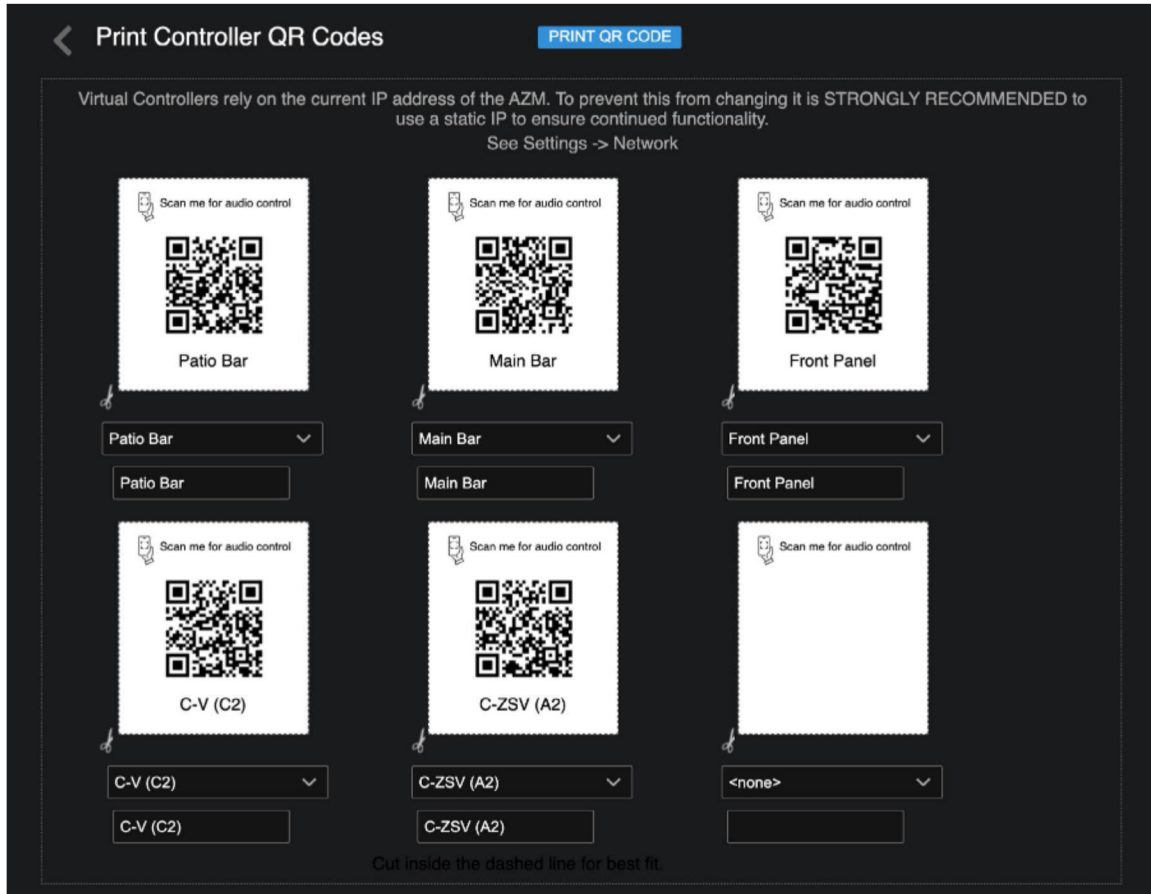
If “Schedule Items” above in virtual actions Setup is “Enabled”, the daily bell schedule pre-configured exception schedules will be available as options.



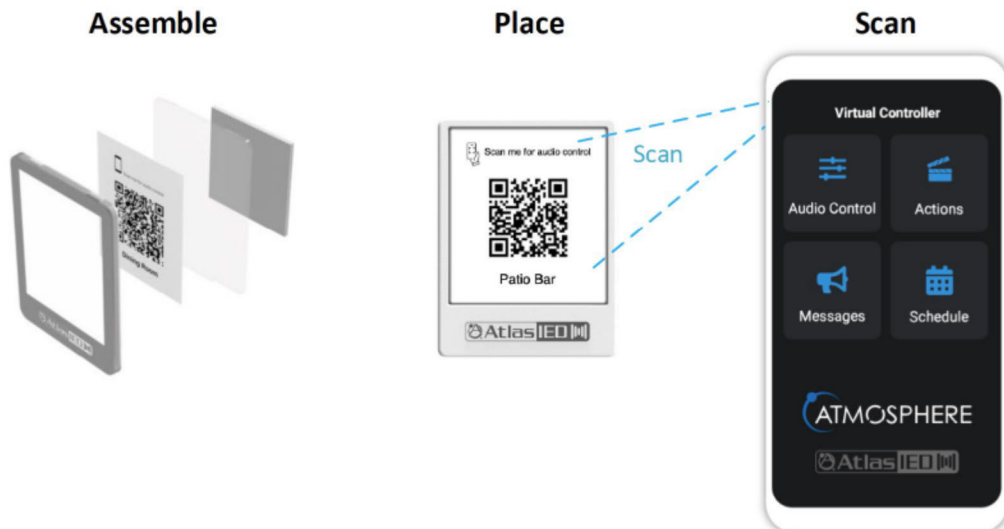
Atmosphere

User Manual

Print, Assemble, Place, and Scan



1. After creating virtual controllers, go back to the Accessories main page and select "Print QR Codes." This will bring up a print window with all QR codes that have been configured. Print and cutout the zone QR codes you would like to put in zones to be scanned.
2. Mount in GEM holder and place on wall. Additional GEM holders can be purchased in a pack of 5 at: <https://www.atlasied.com/gem-5>
3. Scan with mobile device and have instant control of the selections assigned. (Note: device must be connected to the same network as the AZM.)



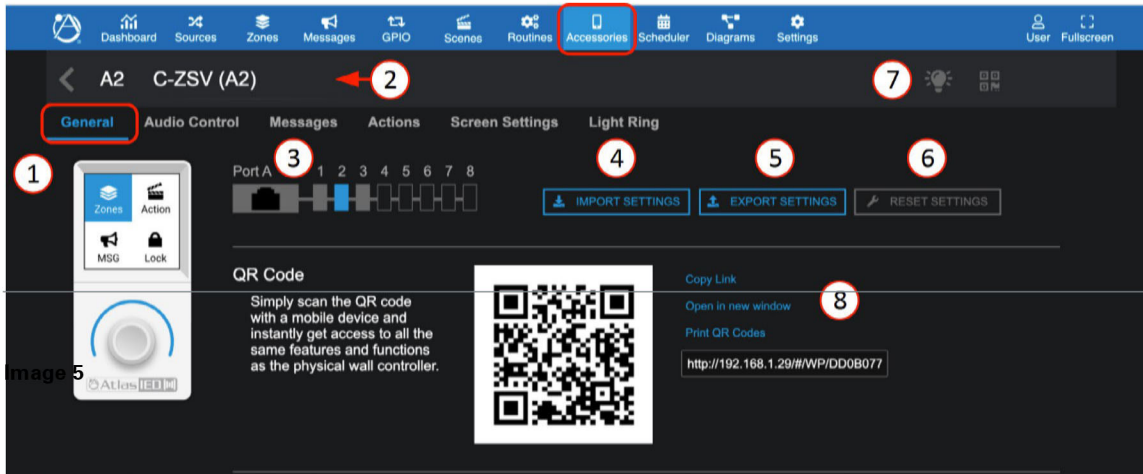
Atmosphere

User Manual

Setting up Accessory Port wall controllers

Note: see **Inputs - Audio Wall Plates** section for **A-XLR, A-RCA,** and **A-BT** settings UI pages

General Settings Page for C-ZSV



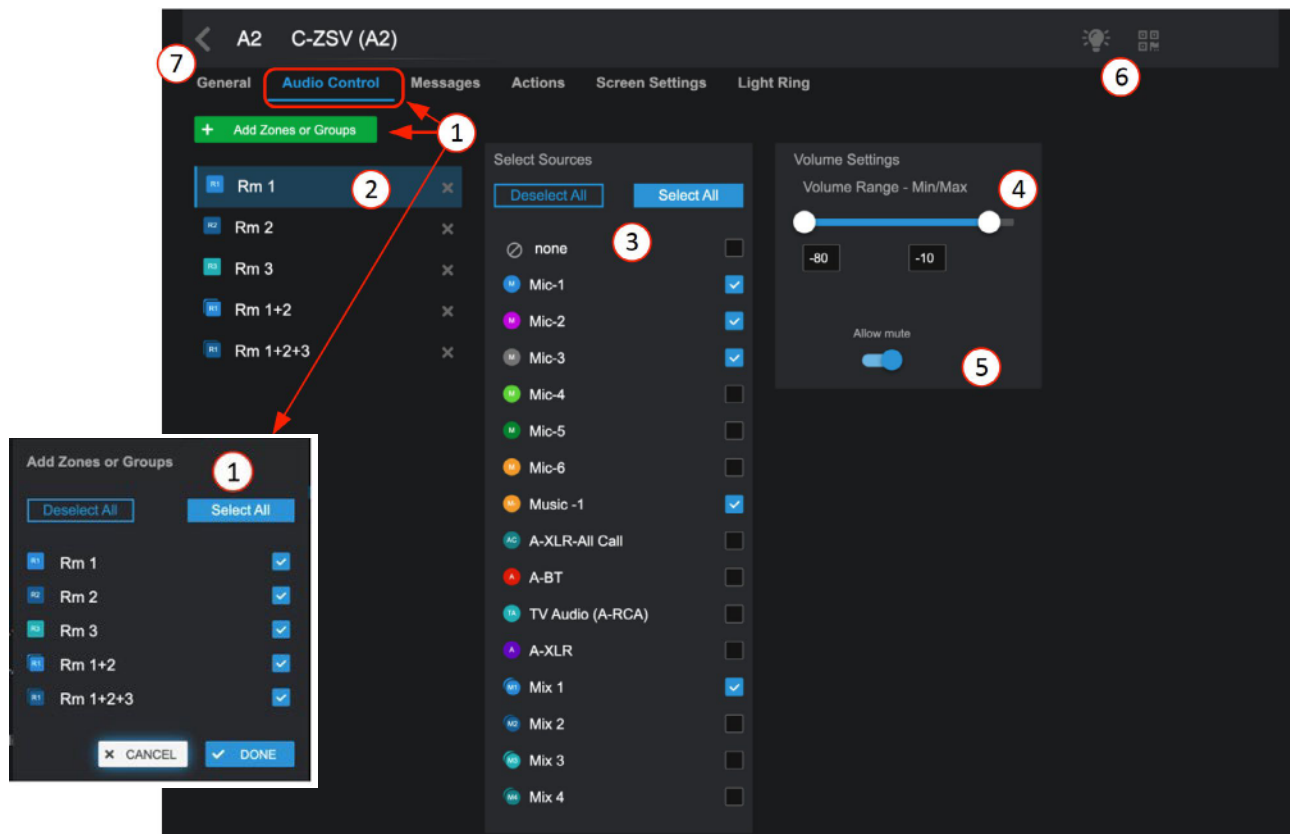
1. The General Settings page shows the connected port, with settings pages for Zone Audio Control, Messages, Actions, Screen Settings, and Light Ring.
2. Accessory name – displays the editable name for this accessory.
3. Connected port ID, and location of the accessory on the port wiring bus (Port A-position 2).
4. Import settings – allows a saved configuration file to be imported to duplicate an existing setup.
5. Export settings – saves the configuration file as a backup or to use for importing.
6. Reset settings – allows selecting between: reset to default values or reset parameters and reboot accessory.
7. The locate icon can be clicked on or off causing the connected device to flash to physically identify its location. If left on, it will automatically shut off after 30 minutes. Additionally, pressing or turning the encoder on the controller will cancel the locate flashing.
8. In addition to the wired wall controller a virtual wall controller is automatically created that emulates the settings by scanning the QR code. There are various ways to use the QR codes: Copy Link, Open in New Window, or Print the QR code for display in the GEM mounting frame.



Atmosphere

User Manual

Zones Audio Control Page



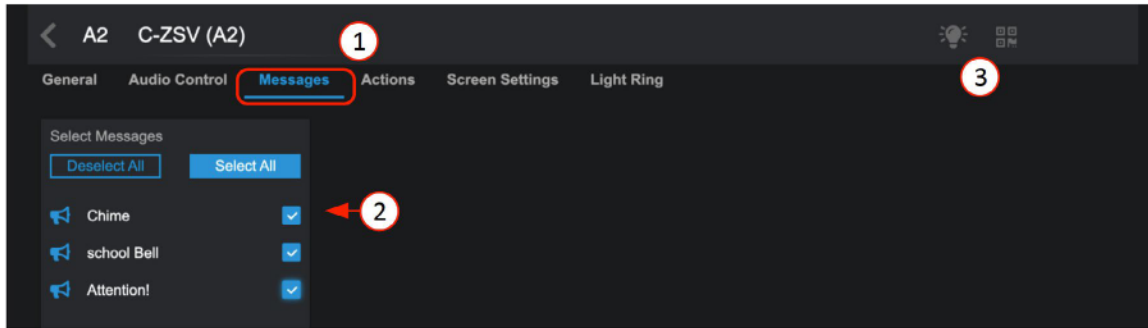
1. Click on "+ Add Zones or Groups"; in the popup, select what you want available in the list to control on the C-ZSV and-or virtual mobile device.
2. In the list, select each of the zones or groups and complete #3, #4, & #5.
3. Select input sources individually or select All to be displayed as a selection list on the C-ZSV and-or virtual controller.
4. Set an acceptable range of volume to adjust.
5. Set mute to allow it to be available on the mobile device to toggle.
6. The locate icon can be clicked on or off and will cause the connected device to flash to physically identify its location. If left on, it will automatically shut off after 30 minutes. Additionally, pressing or turning the encoder on the controller will cancel the locate flashing. Click on the QR code symbol to display a QR code allowing a virtual controller to emulate the wall plate controller. Wall controllers automatically generate a QR code for a virtual controller.
7. Select "<" icon to return to the Accessories page.



Atmosphere

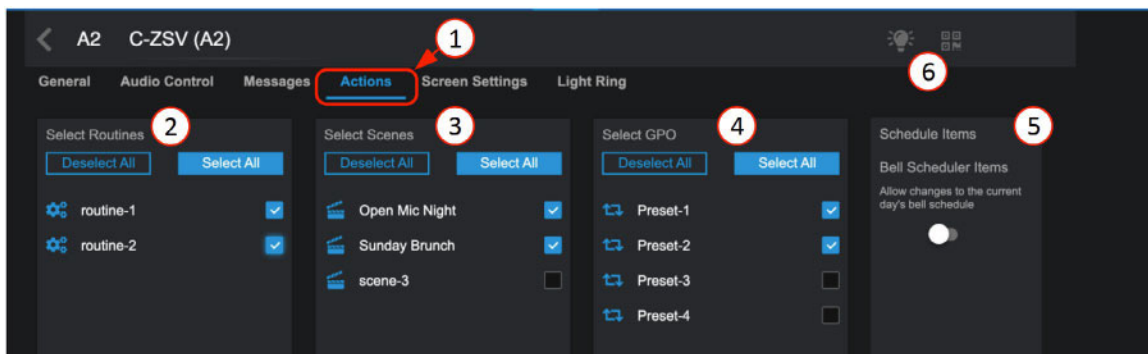
User Manual

Messages Page



1. Select Messages tab to open.
2. Select the messages you want available for control from the C-ZSV and-or virtual mobile device.
3. The light bulb locate icon can be clicked on or off causing the connected device to flash to physically identify its location. If left on, it will automatically shut off after 30 minutes, or will cancel when the controller encoder is used. If you see the QR code symbol and click on it, a QR code will display allowing a mobile virtual controller to emulate the wall plate controller.

Actions Page



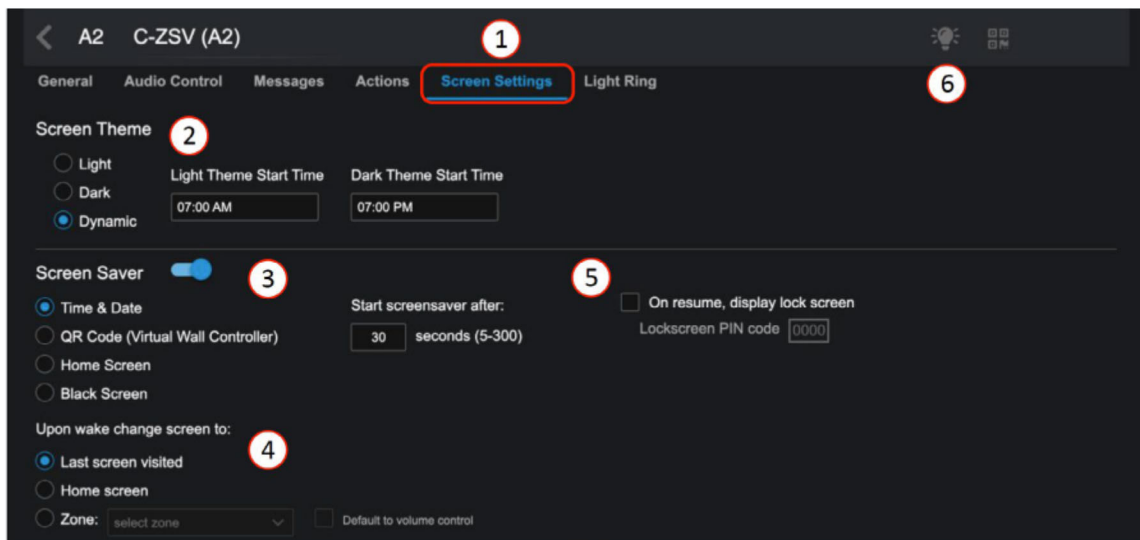
1. Open Actions page
2. Select from the list of pre-configured routines to be included on C-ZSV and mobile device.
3. Select from the list of pre-configured scenes to be included on C-ZSV and mobile device.
4. Select from the list of pre-configured GPO presets to be included on C-ZSV and mobile device.
5. Bell Scheduler change – When enabled, this lets you make an on-the-spot change to the current day's schedule.
6. The light bulb locate icon can be clicked on or off and will cause the connected device to flash to physically identify its location. If left on, it will automatically shut off after 30 minutes or will cancel when the controller encoder is used. If you see the QR code symbol and click on it, a QR code will display allowing a mobile virtual controller to emulate the wall plate controller.



Atmosphere

User Manual

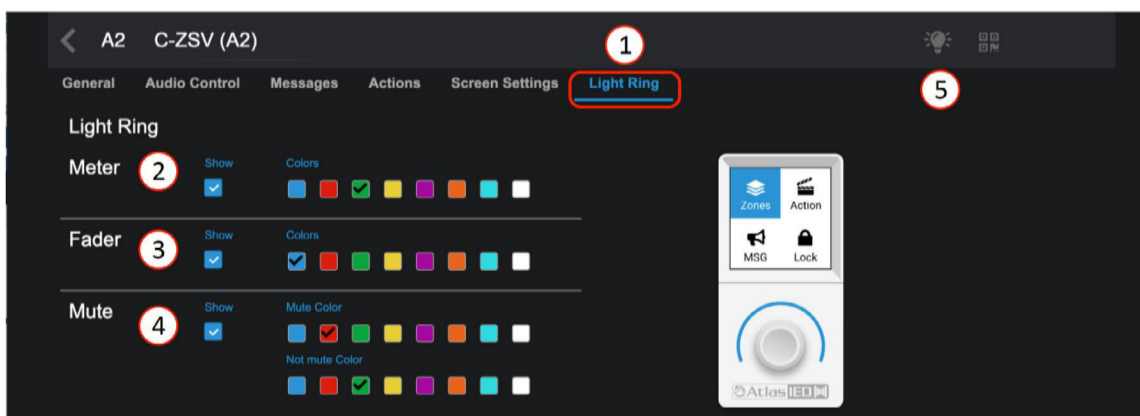
Screen Settings Page



1. Select Screen Settings tab to open.
2. Select the theme for the C-ZSV display and time of day to change if desired.
3. Set screen saver display and time to activate in X seconds.
4. Select the behavior desired when it wakes.
5. Set PIN code to restrict access to this controller if desired.
6. The locate icon can be clicked on or off and will cause the connected device to flash to physically identify its location. If left on, it will automatically shut off after 30 minutes or will cancel when the controller encoder is used. If you see the QR code symbol and click on it, a QR code will display allowing a mobile virtual wall controller to emulate the wall plate controller.



Light Ring Settings Page

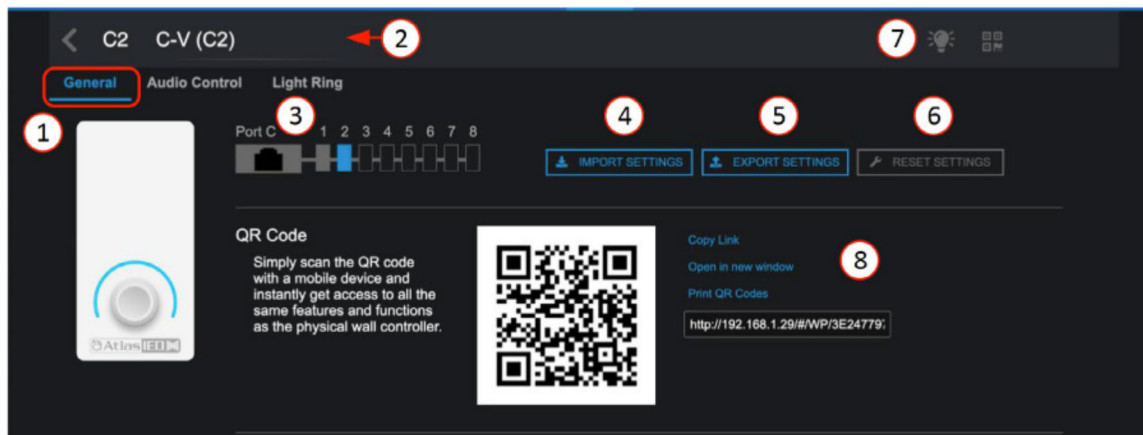


1. Select Light Ring tab to open.
2. Select to show and color of light ring for Meter level mode.
3. Select to show and color of light ring for Fader level mode.
4. Select to show and color of light ring for Mute toggle On/Off mode.
5. The locate icon can be clicked on or off and will cause the connected device to flash to physically identify its location. If left on, it will automatically shut off after 30 minutes or will cancel when the controller encoder is used. If you see the QR code symbol and click on it, a QR code will display allowing a mobile virtual wall controller to emulate the wall plate controller.

Atmosphere

User Manual

General Settings Page for C-V



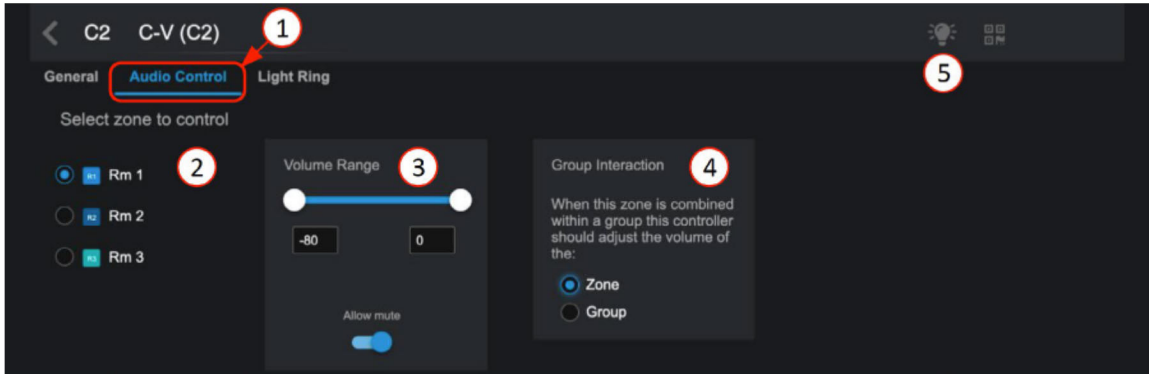
1. The General Settings page shows the connected port, with settings pages for Zone Audio Control, and Light Ring.
2. Accessory Name – displays the editable name for this accessory.
3. Connected port ID, and location of the accessory on the port wiring bus (Port C-position 2).
4. Import Settings – allows a saved configuration file to be imported to duplicate an existing setup.
5. Export Settings – saves the configuration file as a backup or to use for importing.
6. Reset Settings – allows selecting between: Reset to default values or Reset parameters and reboot accessory.
7. The locate icon can be clicked on or off causing the connected device to flash to physically identify its location. If left on, it will automatically shut off after 30 minutes or will cancel when the controller encoder is used.
8. In addition to the wired wall controller a virtual controller is automatically created that emulates the settings by scanning the QR code. There are various ways to use the QR codes: Copy Link, Open in New Window, or Print the QR code for display in the GEM mounting frame.



Atmosphere

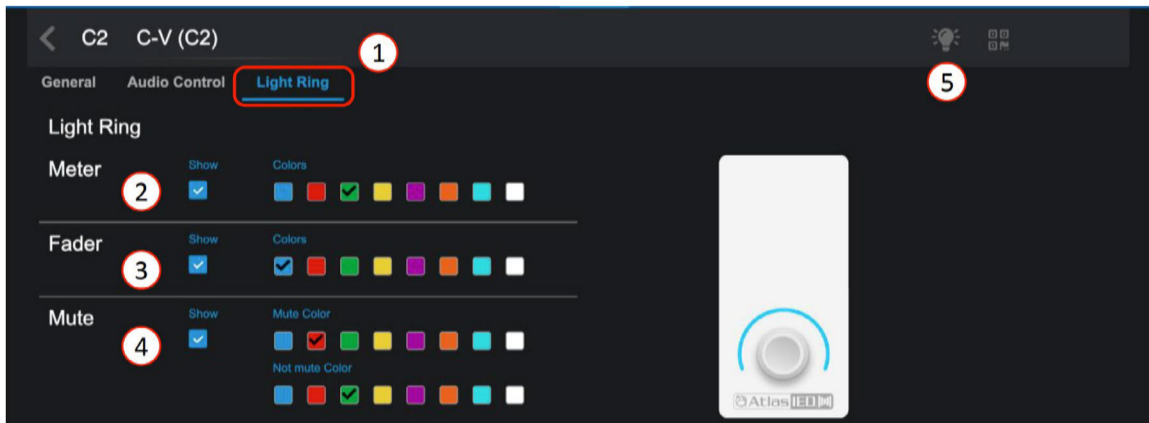
User Manual

Audio Control Page



1. The C-V acts like a traditional zone output volume controller. The Zone tab opens the list of zones available for control.
2. Select the zones to be displayed for control by the C-V and-or mobile device.
3. Set an acceptable range of volume to adjust. Set mute to allow it to be available on the C-V or mobile device to toggle.
4. Select the control behavior when controller is combined in a group or zone.
5. The locate icon can be clicked on or off causing the connected device to flash to physically identify its location. If left on, it will automatically shut off after 30 minutes or will cancel when the controller encoder is used.

Light Ring Settings Page

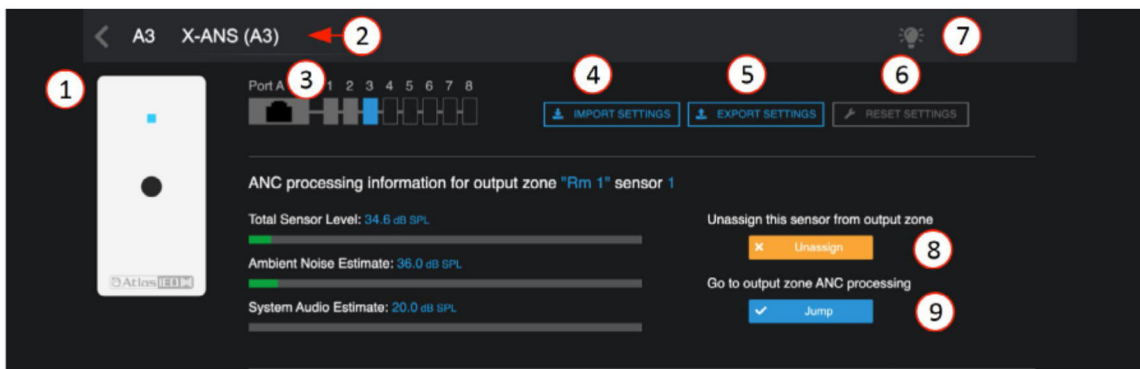


1. Select Light Ring tab to open.
2. Select to show and color of light ring for Meter level mode.
3. Select to show and color of light ring for Fader level mode.
4. Select to show and color of light ring for Mute toggle On/Off mode.
5. The locate icon can be clicked on or off causing the connected device to flash to physically identify its location. If left on, it will automatically shut off after 30 minutes or will cancel when the controller encoder is used.

Atmosphere

User Manual

General Settings Page for X-ANC



1. The General Settings page shows the connected accessory port.
2. Accessory Name – displays the editable name for this accessory.
3. Connected Port ID, and location of the accessory on the port wiring bus. (Port A, position 3.)
4. Import Settings – allows a saved configuration file to be imported to duplicate an existing setup.
5. Export Settings – saves the configuration file as a backup or to use for importing.
6. Reset Settings – allows selecting between: Reset to default values or Reset parameters and reboot accessory.
7. The locate icon can be clicked on or off causing the connected device to flash to physically identify its location. If left on, it will automatically shut off after 30 minutes or will cancel when the controller encoder is used.
8. The ANC processing data is shown in real time along with a unassign the ANC from the assigned Zone.
9. A jump button takes you directly to the assigned zone ANC settings page to make adjustments. From the ANC settings page it also has a link on the sensor noise level meter ">" that returns you to this Accessory page.

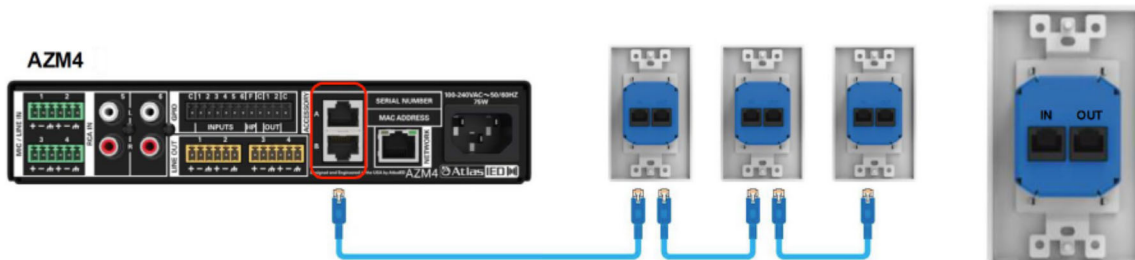


Plug and Play Accessories Connection Rules

To guarantee good performance of all connected accessories, follow these rules:

1. Use CAT5e or CAT6 non-shielded cable (see cabling section) to connect accessories to the host processor bus-ports.
2. Up to 8 accessories can be daisy chained from a single port.
3. The "IN" port is connected to the upstream device (AZM or another accessory). (see image rule 3)
4. The maximum cable length from the AZM to the last accessory on the chain is 1000'(305m). (see image rule 4)
5. One audio wall plate (A-XLR, A-RCA, A-BT) can be used per bus-port. (see image rule 5)
6. Up to 16 accessories can be connected to a single AZM. (see image rule 6)
7. Up to 12 QR code virtual controllers can be used in addition to wired accessories.

Image Rule 3



Atmosphere

User Manual

Image Rule 4

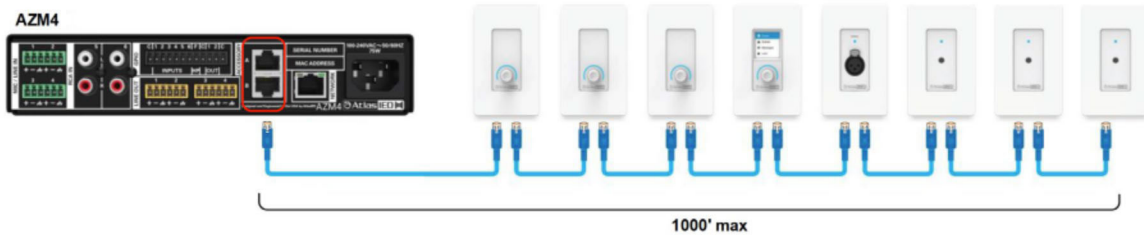


Image Rule 5

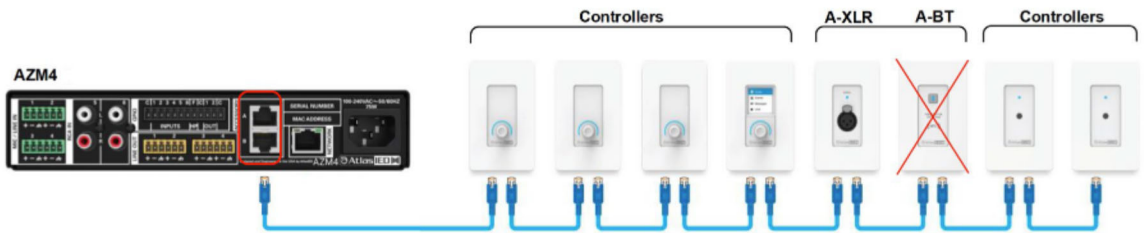


Image Rule 6

